

YEAR 2015

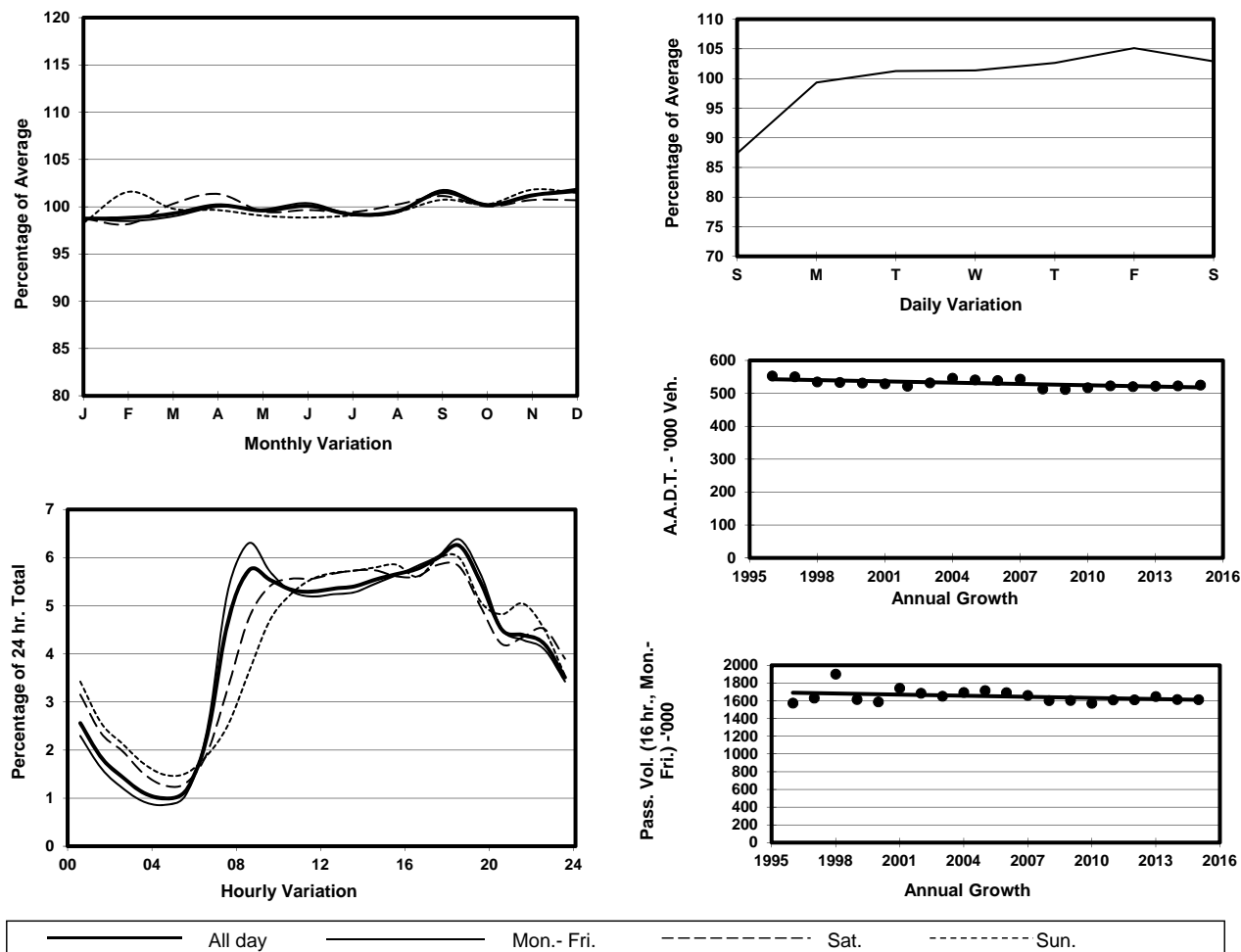
Location

Screenline A-A(Urban Railway Line)

Stations on Cordon/Screenline

3001, 3002, 4202, 4203, 4204, 4205, 4206, 4207, 4208, 4221 and 4401

1. TRAFFIC FLOW VARIATION AND GROWTH



2. TRAFFIC CHARACTERISTICS (BY DIRECTION)

Parameter	All - Day	Mon. - Fri.	Sat.	Sun.
EAST BOUND				
A.A.D.T.	276040	284950	281010	239760
R 12 / 24 - %	65.7	67	63.1	61
R 16 / 24 - %	84.9	86.1	82	81.4
AM Peak Hour	0800-0900	0800-0900	0900-1000	0900-1000
One-way flow at AM peak hour	15560	17730	13990	10730
T - % (AM)	-	10.9	-	-
PM Peak Hour	1800-1900	1800-1900	1700-1800	1700-1800
One-way flow at PM peak hour	17230	18180	16520	14290
T - % (PM)	-	7.9	-	-
Prop.of commercial vehicles - 16 hr.	-	10.2	-	-
WEST BOUND				
A.A.D.T.	249430	254440	263270	222620
R 12 / 24 - %	67.5	68.4	66.1	63.6
R 16 / 24 - %	85.4	86.4	83.3	82.1
AM Peak Hour	0800-0900	0800-0900	0900-1000	0900-1000
One-way flow at AM peak hour	14590	16270	15440	11000
T - % (AM)	-	9.4	-	-
PM Peak Hour	1800-1900	1800-1900	1700-1800	1800-1900
One-way flow at PM peak hour	15580	16220	15350	13580
T - % (PM)	-	7.7	-	-
Prop.of commercial vehicles - 16 hr.	-	8.7	-	-

3. OTHER INFORMATION AND COMMENT

4. Vehicle classification and occupancy - Monday to Friday

Time		Class of vehicle									
		Motor	Private	Taxi	Private	PLB	Goods veh.		Non	Fr. Bus	
		Cycle	Car		LB		Light	M & H	Fr. Bus	SD	DD
0700-0800	Pro	4.9	32.9	26.6	3.6	4.6	14.2	3.7	5.7	0.1	3.7
	Ocp	1.1	1.4	2.0	7.2	11.9	1.5	1.2	14.0	17.2	45.5
0800-0900	Pro	3.7	46.2	20.4	1.6	4.2	13.9	3.7	3.1	0.1	3.1
	Ocp	1.1	1.4	2.0	6.1	13.4	1.6	1.3	16.0	21.0	53.5
0900-1000	Pro	2.5	40.0	22.3	0.8	3.6	21.0	4.4	2.1	0.1	3.3
	Ocp	1.1	1.4	2.0	2.7	11.7	1.5	1.3	10.3	17.6	31.0
1000-1100	Pro	2.4	32.2	26.4	0.7	3.1	24.0	5.9	1.8	0.1	3.4
	Ocp	1.0	1.5	1.9	2.9	9.8	1.5	1.4	8.8	15.2	26.6
1100-1200	Pro	2.3	34.1	24.0	1.6	3.2	24.6	5.1	2.0	0.1	2.9
	Ocp	1.1	1.4	2.0	2.6	10.0	1.5	1.4	9.9	14.9	29.0
1200-1300	Pro	2.6	35.1	26.0	1.7	3.5	21.3	4.5	2.4	0.1	2.7
	Ocp	1.1	1.5	1.9	5.5	9.8	1.5	1.3	13.9	12.9	29.9
1300-1400	Pro	2.5	35.0	23.8	1.7	3.4	23.1	4.9	2.5	0.1	3.0
	Ocp	1.1	1.5	2.1	3.5	11.0	1.5	1.3	12.8	14.5	32.9
1400-1500	Pro	2.4	37.3	23.3	1.2	3.0	23.3	4.9	1.9	0.1	2.7
	Ocp	1.1	1.4	2.1	2.1	11.1	1.5	1.4	10.7	15.8	32.7
1500-1600	Pro	2.7	39.0	21.5	2.0	2.8	22.2	4.5	2.4	0.1	2.8
	Ocp	1.1	1.4	2.0	6.4	11.9	1.5	1.3	13.8	15.5	33.7
1600-1700	Pro	3.1	40.9	21.9	2.2	2.8	19.6	3.8	2.7	0.1	2.9
	Ocp	1.1	1.5	2.0	4.0	12.6	1.5	1.3	9.1	18.0	36.0
1700-1800	Pro	4.5	43.3	21.9	1.3	3.4	17.4	2.5	2.2	0.1	3.2
	Ocp	1.1	1.4	2.1	3.4	13.3	1.5	1.4	10.6	19.5	46.0
1800-1900	Pro	4.2	50.1	20.8	0.5	4.1	12.0	3.0	2.4	0.1	2.8
	Ocp	1.1	1.4	2.1	2.9	15.0	1.6	1.4	16.4	17.7	60.6
1900-2000	Pro	3.7	51.2	26.1	0.1	3.7	8.1	1.3	2.6	0.1	3.1
	Ocp	1.1	1.5	2.1	2.2	14.0	1.4	1.3	17.6	14.1	49.0
2000-2100	Pro	2.6	46.7	30.6	0.1	5.1	7.7	1.3	2.0	0.1	3.7
	Ocp	1.1	1.4	2.0	1.5	11.6	1.5	1.3	10.0	10.7	32.8
2100-2200	Pro	3.7	43.5	34.4	0.1	4.6	6.5	1.6	1.5	0.1	3.9
	Ocp	1.1	1.5	2.2	4.2	11.9	1.5	1.2	6.0	10.1	31.6
2200-2300	Pro	3.5	44.9	36.5	0.1	4.8	4.3	1.1	1.0	0.1	3.8
	Ocp	1.2	1.7	2.1	2.5	11.4	1.6	1.4	5.9	9.1	32.3
16 hours	Pro	3.2	40.9	24.9	1.3	3.7	16.8	3.6	2.4	0.1	3.2
	Ocp	1.1	1.5	2.0	4.7	12.1	1.5	1.3	12.5	15.5	38.2

Legend

Pro. Proportion of vehicles in % (Sum may not add up to 100% due to figure rounding)*

Ocp. Average occupancy of vehicles including both driver and passengers*

M&H Medium and Heavy

* All traffic data are collected from combined bounds except for one way traffic